





## ABOUT US

The Glocal University is duly established by State Legislature of Uttar Pradesh vide The Glocal University Uttar Pradesh Act, 2011 (UP Act no. 2 of 2012) and notified by Apex Regulatory Body University Grant Commission (UGC) under Section 2(f) and 12(B) of the UGC Act 1956 offering 50+ UG/PG/Professional courses in Management & Commerce, Pharmacy, Agriculture, Life Sciences, Engineering & Technology, Law, Ayurveda Medicine, Unani Medicine, Nursing, Paramedical, Education, etc. The University is situated near the serene picturesque Shivalik range of mountains and spread out in 350+ acres, connected with metallic roads inside the University and state of the art infrastructure including Hostels for both boys & girls separately, Residential Complex for Faculty/Staff, Villa and Guest House, ATM facility, Multi Super Specialty Hospital with ambulance facility, 24x7 power backup, parking areas with the capacity to accommodate approx. 250 vehicles, Central Plaza – An open-air auditorium with a seating capacity of around 2000 and Both outdoor and indoor impressive sports infrastructure etc.

At the Glocal University, we strongly believe in harnessing the power of knowledge by combining learning with extensive application-based study and professional ethics, thus maximizing one's overall potential and nurturing a winning mentality in each of our students. We believe in a radical approach towards education with in-depth study and national/international teaching techniques that encourage a practical application of knowledge along with a code of ethics, hence developing one's inner self and providing the perfect edge.





## APPROVAL & ACCREDITATIONS



ज्ञान - विज्ञानं विमुक्तये

The Glocal University is incorporated by the State Legislature of U.P. vide "The Glocal University Uttar Pradesh Act 2011" (UP Act No. 2 of 2012) and is empowered to confer degree Under Section 22 of UGC Act 1956. Further UGC has already recognized the Glocal University as a Private University incorporated by Uttar Pradesh State Legislature Under Section 2(f) of the University Grant Commission Act 1956.



सत्यमेव जयते  
Ministry of Health  
and Family Welfare

Government of India, Ministry of Health and Family Welfare, Nirman Bhawan, New Delhi, letter No: U-12011/13/2016-ME-1 Dated 20th August 2016 regarding permission to start a new medical college with an intake of 150 students from academic session 2016-17.



The Pharmacy Council of India has accorded approval to conduct B. Pharma (Bachelor of Pharmacy) & D. Pharma. (Diploma in Pharmacy) programmes to our Glocal School of Pharmacy.



The Glocal University is a member of the association of Indian Universities.



National Council for Teacher Education has approved us to conduct B.Ed Programme



The Bar Council of India has approved our Glocal Law School to conduct B.A.L.L.B., B.B.A.L.L.B. & LL.B. Programmes



आयुष मंत्रालय  
MINISTRY OF  
**AYUSH**

IN 2017  
GLOCAL UNIVERSITY  
BECAME THE ONLY  
UNIVERSITY IN THE  
REGION TO GET  
**UGC 12B**  
ACCREDITATION



## AWARDS & ACHIEVEMENTS



GLOCAL UNIVERSITY RECEIVED AWARD FOR THE  
**MOST INNOVATIVE  
UNIVERSITY WITH EXCELLENT  
CAMPUS OF THE YEAR**





AWARDED AS THE  
TOP UNIVERSITY IN

# NORTH INDIA

BY JAGRANJOSH.COM



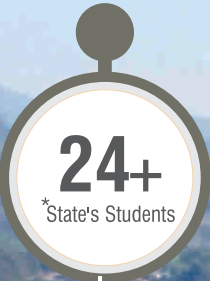
DEWANG MEHTA

# NATIONAL AWARD

FOR BEST EMERGING  
B-SCHOOL



# CONNECT TO GLOBAL WORLD





**350+**

Acres of Area

**500+**

Faculty Member

**700+**

Bed Hospital





## VISION

Global canvass, local colours—that is what we, at Glocal, simply believe in. It is the prism that refracts all our endeavors—whether it is our architecture, curriculum design, pedagogy, hostel life, laboratories, café or the library. In short, we simply celebrate the liminal space where the 'global' meets the 'local'. We are traditional, yet we are not. We are modern, yet we are not really so. We understand the hybrid nature of the global workplace and that is why no binaries constrain us. To flourish in the world today, one cannot afford substantive and rigid visions of the good life. One has to appreciate the negotiated nature of the contemporary. That is why we emphasize reflexivity, flexibility, diversity and accommodation as key values. While that is the ethos of critical engagement, we aspire to craft, we are equally keen to develop top quality professionals for our customers: the corporate, public sector and the academia.

## MISSION

At the Glocal University, we are committed to producing top-notch professionals who have a zeal for perpetual learning and are capable of performing well in diverse professional and cultural settings. While we provide the students with all the tools required to successfully take on the world, we also endeavor to instill in them a healthy cultural rootedness that combines the best of traditional values with modern and progressive sensibilities.

## CORE VALUES

Respect, Excellence, Integrity, Diversity and Moral are the core values which were voiced at the beginning are the soul of the Glocal University's objective. These values brighten the academic and co-curricular programs of the University, its functional philosophy, its identity and its commitment to knowledge for both individual improvement and communal development.

### RESPECT

"Respect is an appreciation of the separateness of the other person, of the ways in which he or she is unique." — Annie Gottlieb

"Respect your fellow human being, treat them fairly, disagree with them honestly, enjoy their friendship, explore your thoughts about one another candidly, work together for a common goal, and help one another achieve respect. Don't use destructive lies, unfounded fears, or debilitating anger." — Bill Bradley

At the Glocal University, we recognize the expertise of all members of the University and their contributions to the University and Community and encourage them for individual contribution. We include all the stakeholders in the decisions which affect them. Male or female, skilled or unskilled, young or old, staff or student, we treat everyone with respect and encourage feelings of dignity. Our respect for personal dignity and individual potential has steadily motivated Glocal to welcome the students and help them succeed in their life. Our professional courtesy and fair treatment stimulate trust among the staff members.

### EXCELLENCE

"Excellence is the gradual result of always striving to do better." — Pat Riley

Our commitment to excellence drives us to develop and pursue high intellectual, social, physical and, ethical standards for quality staffing, facilities, academic & non-academic programs, and services. Our objective is to continuously improve all aspects of University life such as academic, sports, campus environment, publications, etc. bring out the outcomes which are exemplary rather than just acceptable. We encourage creativity, innovation, initiative among our students and staff and setbacks are taken as learning experiences rather than difficulties that promote success for the students and staff.

### INTEGRITY

"Always do right. This will gratify some people and astonish the rest." — Mark Twain.

Integrity indicates that our arguments and our actions both are coherent. It is the hallmark of a person who exhibits precise moral and ethical principles at work. At the Glocal, every member is called for living according to what is expected to be an educational institution with high morals and ethics.

### DIVERSITY

"A diverse mix of voices leads to better discussions, decisions, and outcomes for everyone." — Sundar Pichai

At Glocal, we strongly believe that not only the similarities but the differences are also the strength of an institution. We see the differences as opportunities to establish a common bond among the members of the Glocal University. The Glocal community is built of the diverse people and reflects the community we serve. The University is committed to provide education with integrated diversity topics that promote a superior understanding of diversity and prepare our students to live and serve in international society. We ensure fair and equal access to University resources for all staff.

### MORAL

We believe in adjusting the rhythm of an individual's life with the rhythm of society. Our aim is not just to give the certificates rather we aim to make a child perfect and follow the path of right ethics and principles of life. We aim to inculcate the principles of truthfulness, honesty, charity, hospitality, tolerance, love, kindness and sympathy among our grown-ups.

What makes Glocal School special: Democratic experience, value education for spiritual growth, Mentoring groups, House parent connections, Family school, and community partnerships.







FROM THE DESK OF  
**ADDITIONAL**  
**PRO-CHANCELLOR**  
GLOCAL UNIVERSITY

**Prof. B.L. Raina**

M.Tech, PhD, USA

It is a great pride and privilege for me to be associated with this outstanding institution having a dream to impart the state of the art education to one and all. I feel honoured for being a part of the Glocal University and particularly with its founder Haji Mohd. Iqbal, for his public service and nobility. Under his guidance, I would like to utilize my experience, knowledge and expertise to fulfil his vision to make 'Glocal' unique. I believe I have the urge, vision and the resolve to create a significant and meaningful impact on academics administration and research, as demonstrated by my record and work experience (both in India and USA)

While we are all strongly committed to impart value based quality education, produce myriad merits in the university and explore all the avenues for maximum employability, yet we are emotionally committed to the cause of education, its aim, objective and vision which is nothing less than excellence in academics leading hopes and dreams. The University has designed a unique learning experience that focuses on all round student development while imparting high quality education to the students. We are fully committed to develop the academic excellence. Our success will be measured by the number of students we educate and quality of education we provide. It will be reinforced by talented team which commit their professional lives to the Glocal students, their parents, the teachers, the staff and all those who are directly or indirectly associated with us and have made our current growth possible.

Our mission is to develop young leaders capable of providing insightful direction to any organization and thereby creating knowledge, loyal and dedicated human resource. Our country is passing through a phase of economic and development renaissance. Challenges contribute to the process of growth and development which is sustainable and in harmony with Mother Nature. We all are living in an era of unprecedented change where many opportunities await us. How we make use of these depends on what we do and how we choose to do it.



FROM THE DESK OF  
**VICE CHANCELLOR**  
GLOCAL UNIVERSITY

**Prof. Satish Sharma**

Ph.D Mahatma Jyoti Rao Phoole  
University, Jaipur,  
M.Pharm (Pharmacology) DIPSAR  
(Delhi University) with a Gold Medal

It is a matter of great delight and pride that Glocal University is progressing leaps and bound; and has emerged as one of the premier Institutions in North India. The 'core values' of this University is derived from fulfilling the career related needs of the young enthusiastic minds to perfection, by instilling in them the global skills, holistic knowledge and ethics, so that they can face the global challenge with a sweet smile on their faces. The rich cultural heritage of Glocal University, reflecting 'unity in diversity' attracts the aspiring students from across the globe to build their future. We as a team at Glocal University strive to prepare students to become responsible and valuable citizens of the Nation, so as to contribute towards the welfare and development of the society and country at large.

The faculty and staff are committed to nurture, refine and mould the talent and skill of the students by engaging them in meticulously designed, co-curricular and extra-curricular activities. Due emphasis is given on grooming the overall personality of the students by conducting 'Student Development Programs' viz. workshops to improve communication skills, guest lectures, seminars, industrial visits, health camps, rejuvenation sessions, cultural activities, a series of personality development programs, group discussions, mock interview, soft skills development, yoga-meditation workshops, spiritual endeavors and summer internships. To develop the scientific temperament and scholarly attitude, the students are motivated and guided to undertake minor research projects at undergraduate level. The students and the faculty members are encouraged to participate; and also to present papers, in national and international seminars/conferences. Their research papers are duly published in reputed journals and abstract books. Our students are placed in top multinational companies as a result of the meticulously designed T&P program. Students have qualified GATE/GPAT and other competitive examination and have also won national and international awards in various competitions.

I feel extremely pleased to apprise that by the concerted efforts and commitment of faculty and staff; and whole-hearted support and co-operation of the Chancellor, The Glocal University is taking fast strides towards excellence and has emerged as one of the most admired and reputed Universities of the region. Through this message, I welcome you and invite you to have a feel of our perfect academic environment.



## OUR DIGNITARIES



Chief Guest: Hon'ble Mr. Justice V. Gopala Gowda Judge, Supreme Court of India

















## OUR MOU's

- MoU - Nahda University, Bani Sweif, Egypt.
- MoU - Partnership Agreement between Embassy of the Republic of Mali in India and Glocal University.
- MoU - Cooperation Protocol between Istanbul Aydin University and Glocal UniversityService Agreement - Adept Consultancy, Bahrain and Glocal University.
- MoU - The Best Future (For Educational Consultancies), Riyadh, of Saudi Arabia and Glocal University.
- MoU - Silverpeak Global Pvt. Ltd, JapanMOU - The Technical and Further Education Commission (TAFE) and Glocal University.
- MoU - Institute of Mines Telecom (IMT), France and Glocal University.
- MoU - Nagasaki Institute of Applied Science (NiAS), Japan and Glocal University.
- MoU - TWG International, Hyderabad and Glocal UniversityMOU - Ala'a Kittansh & Partner Company (FTC), Jordan and Glocal University.
- MoU - Datec Learning Centres, Papua New Guinea and Glocal UniversityMOU - Mamman International, Delhi (MNIHE, Afghanistan) and Glocal University.
- MoU- Tashkent State University of Economics and Glocal University
- MoU- Bajaj Motors Ltd. and Glocal University
- MoU - Surin Automotive Pvt. Ltd. and Glocal University



STUDENTS FROM  
MORE THAN



**\*15 COUNTRIES**





# COURSES OFFERED

## GLOCAL UNIVERSITY

Glocal University is duly established by State Legislature of Uttar Pradesh vide The Glocal University Uttar Pradesh Act, 2011 (UP Act no. 2 of 2012) and notified by Apex Regulatory Body University Grant Commission (UGC) under Section 2(f) and 12(B) of the UGC Act 1956 offering 55+ UG/PG/Professional courses

### GLOCAL SCHOOL OF BUSINESS & COMMERCE

**BBA**  
**B.Com. (Hons)**  
**MBA** in Marketing/HR/Finance

### GLOCAL COLLEGE OF AYURVEDIC MEDICAL SCIENCE & RESEARCH CENTRE BAMS

### GLOCAL COLLEGE OF UNANI MEDICAL SCIENCE & RESEARCH CENTRE BUMS

### GLOCAL SCHOOL OF SCIENCE & TECHNOLOGY

**B.Tech.** in Computer Science with  
specialization in **Artificial Intelligence** (Data Science)  
in collaboration with **UpGrad**

**B.Tech.** in Computer Science with  
specialization in **Machine Learning** (Data Science)  
in collaboration with **UpGrad**

**B.Tech.** in Computer Science with  
specialization in **Full Stack Development** (Software Development)  
in collaboration with **UpGrad**

**B.Tech.** in Computer Science Engineering

**B.Tech.** in Mechanical Engineering

**B.Tech.** in Civil Engineering

**B.Tech.** in Petroleum Engineering

**B.Tech.** in Electrical Engineering

**B.Tech.** in Electronics & Communication Engineering

**M.Tech.** in all above discipline

**BCA**

**MCA**

### GLOCAL COLLEGE OF NURSING

**B.Sc. Nursing \***  
**A.N.M.**  
**G.N.M.**

### GLOCAL SCHOOL OF EDUCATION

**B.Ed.** (Bachelor in Education)  
**D.El.Ed**

### GLOCAL SCHOOL OF POLYTECHNIC

**Diploma** in Automobile Engineering  
**Diploma** in Mechanical Engineering  
**Diploma** in Civil Engineering  
**Diploma** in Electronics & Comm. Engineering  
**Diploma** in Electrical Engineering  
**Diploma** in Computer Science Engineering

### GLOCAL SCHOOL OF PHARMACY

**B.Pharm.**  
**D.Pharm.**  
**M.Pharm.** in Pharmaceutics  
**M.Pharm.** in Pharmacology

### GLOCAL SCHOOL OF LIFE & ALLIED HEALTH SCIENCES

**B.Sc.** in Biotechnology  
**B.Sc.** in Microbiology  
**M.Sc.** in Biotechnology  
**M.Sc.** in Microbiology

### GLOCAL SCHOOL OF AGRICULTURAL SCIENCES

**B.Sc.** Agriculture  
**M.Sc.** Agronomy  
**M.Sc.** Environmental Science  
**Diploma** Agriculture

### GLOCAL SCHOOL OF PARAMEDICAL SCIENCES

**B.Sc.** in Cardiac Care Technology  
**B.Sc.** in Anesthesia Technology  
**B.Sc.** in Medical Radiography & Imaging Technology  
**B.Sc.** in Operation Theater Technology  
**B.Sc.** in Medical Lab Technology  
**M.Sc.** Medical Lab Technology  
**Diploma** in Emergency & Trauma Care Technology  
**Diploma** in Dialysis Technician  
**Diploma** in Cardiology Technician  
**Diploma** in C.T. Scan  
**Diploma** in Optometry  
**Diploma** in O.T. Technician  
**Diploma** in MRI Technician  
**Diploma** in X-Ray Technology  
**Diploma** in Health Assistant

### GLOCAL LAW SCHOOL

**B.A.LL.B.**  
**BBA.LL.B.**

### DOCTORATE/M.PHIL COURSES

**Management** Finance, Marketing  
HR, Economics, Commerce  
**Agriculture** Agronomy, Plant Physiology  
Plant Biotechnology, Agronomy,  
Entomology, Genetics & Plant breeding,  
Horticulture, Soil Sciences  
**Law** History, Political Science, Law  
**Life Science** Biotech, Bio Chem,  
Microbiology, Botany, Zoology,  
**Pharmacy** Pharmaceutics,  
Pharmacognosy, Pharm.Chemistry  
**Engineering** CSE, Mechanical,  
Mathematics, Chemistry, Physics  
**Education**  
**English**

# GLOCAL MEDICAL COLLEGE

## SUPER SPECIALTY HOSPITAL AND RESEARCH CENTRE

In order to bolster the vision of social service, Glocal hospital is serving the poor and needy belonging to the underprivileged classes of the region. The 700-bed multi specialties fully functioning hospital with all modern and sophisticated equipment and specialties provides a comprehensive Ambulance transport service to patients requiring in need of the same. The hospital is equipped with fully modern facilities including emergency ward, Out Patient Department, and Surgery in different specialties. The Outdoor Patient Department caters the patients in the departments of medicine, pediatrics, orthopedic, Gynecology, T.B. Chest, Psychiatry, Dental, and ENT.

### FACILITIES AVAILABLE

Dialysis

Colour  
X-ray

CT Scan

Ultrasound

Pharamacy

Pathology &  
Microbiology  
Lab





# GLOCAL COLLEGE OF NURSING



## COURSES OFFERED

<b>A.N.M.</b>	(2 years)
<b>G.N.M.</b>	(3 years)
<b>*B.Sc. Nursing</b>	(4 years)

## LABORATORIES

- Fundamental of Nursing
- Community Health Nursing
- Nutrition Lab
- OBG & Pediatrics
- Pre- clinical lab
- Computer Lab



## HIGHLIGHTS

- Highly competent and dedicated nursing faculty.
- Good infrastructure, modern classrooms and nursing labs with advance nursing equipment's.
- Provide good moral and value based nursing education.
- Own parent hospital and collaborating with different organization and hospitals to give them best clinical training.





# GLOCAL SCHOOL OF PARAMEDICAL SCIENCES & RESEARCH CENTRE

- Glocal School of paramedical sciences & Research Centre is dedicated to produce highly trained paramedics who shall be an asset to the humanity.
- Paramedics forms an essential part of the hospital and provide primary medical care.
- Paramedics need to work in a team and must have the presence of mind to take right decisions.
- High class laboratory infrastructure and hands on training ensure the highest success rate in paramedical related career.



## MENTORSHIP & TRAINING

Hands on training of latest modalities like CT scan, CR system, cell counter, various analyzer & dialysis equipment in 700 bedded Glocal Super Specialty Hospital & Research Centre by well qualified professionals.



## MENTORSHIP & TRAINING

A paramedic may find opportunities to work in private sector as well as in government sector.

Paramedics can work as:

- |                               |                           |
|-------------------------------|---------------------------|
| • Medical lab technologist    | • Dialysis therapist      |
| • Radiologic technologist     | • Perfusion technologist  |
| • Radiography technician      | • Cardiac care technician |
| • Scientific officer          | • OT Technician           |
| • Radiation safety officer    | • Demonstrator            |
| • Emergency care practitioner |                           |

## BACHELOR COURSES

- BMRIT (Bachelor in Medical Radiography & Imaging Technology)
- BMLT (Bachelor in Medical Laboratory Technology)
- BCCT (Bachelor in Cardiac Care Technology)
- BANT (Bachelor in Anesthesia Technology)
- BOTT (Bachelor in Operation Theatre Technology)
- BRDT (Bachelor in Renal Dialysis Technology)

The school offers 3 years and 6 months (3 years full time + 6 months internship) bachelor degree in these courses.

## DIPLOMA COURSES

- Diploma in Dialysis Technician
- Diploma in Optometry Technician
- Diploma in CT Scan Technician
- Diploma in M.R.I. Technician
- Diploma in OT Technician
- Diploma in Emergency & Trauma Care Technician
- Diploma in Cardiology Technician.

The school offers 2 years diploma in these courses.





# GLOCAL COLLEGE OF AYURVEDIC MEDICAL SCIENCE & RESEARCH CENTER

Glocal Ayurvedic Medical College is the greatest need of northern India. It is globally known that Ayurveda is in the sense of mankind from the very beginning of this universe & for all living being of total 300 geographical space.

Education in Ayurveda has a rich tradition. It was taught in the University of TAKSHASHILA and NALANDA in ancient times the golden era of Ayurved. However, it suffered a set back during medieval period and more to during British rule in India. Fortunately, Ayurved has received a new impetus after independence and is on its way to revival.

Ayurveda as the world has been moving away from nature. It is facing various health hazards including diseases like AIDS etc. in spite of tremendous advancement in modern medical science. Ayurveda, which is a medical science embracing nature as well as a philosophy of life a way of living, is being recognized as the potential system of medicine all over the world. We find a logical approach towards health and diseases in Classical texts of Ayurved viz. Charak Samhita (Medical Text), Sushrut Samhita (surgical text) and Ashtang Sangrah (Compendium on eight branches of Ayurved).

## COURSES OFFERED

**B.A.M.S.**

**5 YEARS**



## GLIMPSE OF OUR GUIDING LIGHTS



**Dr. U.C. Sharma**

Principal, Glocal Ayurvedic  
Medical Science & Research Centre



**Dr. Rajeev Verma**  
Assitant Professor  
Rachna Sharir



**Dr. Parvesh Sharma**  
Assitant Professor  
Darvyaguna



**Dr. Vikas Kartik**  
Assitant Professor  
Swasthavritta



**Dr. Lekshmi Vijayan**  
Assitant Professor  
Panchkarma



**Dr. Ragini Bhardwaj**  
Assistant Professor  
Basic Principals of Ayurveda



**Dr. Shashank Kumar**  
Assitant Professor  
Kaya Chikitsa



**Dr. Vikram Singh Bagri**  
Assistant Professor  
Ras-Shashtra



**Mrs. Anjoo Bala**  
Assitant Professor  
Sanskrit



# GLOCAL COLLEGE OF UNANI

## MEDICAL SCIENCE & RESEARCH CENTER



The main aim of Unani Education is to promote the cause of this system and to educate through its Philosophy and to impart knowledge of its fundamental theories and practical training, using its special methods for diagnosis and treatment. To strive to make students capable of handling medical as well as surgical cases through their knowledge of Tibb-e-Unani with the help of modern advances and techniques. To create among young practitioners a sense of self confidence that as Unani doctors they are capable of being at par with doctors of other systems and quality to serve in the Medical/Health Services of the country as is being encouraged by Government's Policy of recognizing the Unani System of Medicines. Glocal College of Unani Medical Science & Research Centre is one of the best centers in India to learn Unani system of medicine. A remarkable thing in our system is that the modern medical education M.B.B.S is also provided in the same campus, a unique combination having both systems under same roof. As a result, students will learn both the systems with better understanding.



### COURSES OFFERED

**B.U.M.S.**

**5 YEARS**

### UNANI DAY CELEBRATION



**KULLIYAT DEPARTMENT**



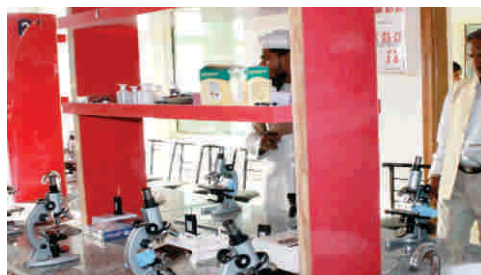
**ANATOMY LAB**



**HERBAL GARDEN**



**PATHOLOGY LAB**



**PHYSIOLOGY LAB**



**PATHOLOGY LAB**





## **SHAPING INNOVATIVE MINDS**



The Glocal School of Science & Technology is a vibrant part of the Glocal University with a very clear vision to produce world class engineers who are creative, confident, socially responsible and globally employable. We also offer Masters in Computer Science and PhD in all departments.

At the Glocal School of Technology & Sciences we focus on 'knowledge' and 'learning'. We have a holistic approach to students' overall development and we impart program and project based learning to facilitate deeper understanding of engineering and science concepts. We encourage multi-disciplinary teaching, learning and research which provide an enriching academic environment. We are committed to develop a strong research culture among our faculty and students and we are developing a world class infrastructure with the aim to attract the best faculty and students locally and from across the country and the world.

The Glocal School of Technology & Sciences provides a nurturing and caring environment for all its faculty and students. We encourage free and fair dialogue and open discussions to enrich our school's activities. We welcome international students from all parts of the world to join our programmes and are striving to establish twin programs, joint degrees, joint research, faculty and student exchange with reputed foreign Universities. Efforts have been mounted to provide global exposure to our students by sending them for internships and sponsoring them for study-abroad programs through our international partners' network. Glocal School of Technology & Sciences is striving to become one of the best engineering education destinations in India.



**GLOCAL**  
UNIVERSITY  
SHAPING GLOBAL MINDS

# B.Tech.

in Computer Science  
with specialisation in  
**Machine Learning &  
Artificial Intelligence**  
(Data Science)



## PROGRAM FLOW

in collaboration with :

**upGrad**  
RAHO AMBITIOUS

## PROGRAM DETAILS

PROGRAM STARTS  
**September 2020**

WEEKLY COMMITMENT

**Per elective: 6 hours per week**

PROGRAM FEE

**₹1,60,000 (Per Year)**

DURATION

**4 years (900+ hours)**

### 1<sup>st</sup> year

- Java (OOP)
- Algorithms
- Competitive Programming
- OOP & Algorithms Project
- LinkedLists
- Stacks & Queues
- Hashtables & Hashmaps
- BSTs & Heaps
- Graphs & Graph Algorithms
- Data Structures Project

### 2<sup>nd</sup> year

- Design Patterns
- Version Control
- System Design
- Databases & Database Design
- Database Design Project
- HTML & CSS
- JavaScript with JQuery
- Backend Integration
- Frontend Project

### 3<sup>rd</sup> year

- HTML & CSS
- JavaScript with JQuery
- Backend Integration
- Frontend Project
- Servlet & JSP
- MVC Architecture
- Hibernate ORMs and JPA
- Unit Testing & Test-Driven Development
- Image Hoster Project
- Advanced JS
- ReactJS
- Backend Integration in React
- ReactJS Instagram Project
- RESTful APIs
- Building an API backend
- Distributed Systems & Scalable Architecture
- Quora Backend Project

### 4<sup>th</sup> year

- Introduction to DevOps
- Introduction to Cloud AWS
- Deploying an Application
- WebApp Deployment Project
- Redux
- React Native
- Backend Integration in React Native
- React Native Project

APTITUDE • CAREER RELEVANT SOFT SKILLS • MOCK INTERVIEW • GROUP DISCUSSION

## WHY FULL STACK DEVELOPMENT WITH UPGRAD



**REALLIFE  
INDUSTRY  
PROJECTS**



**PERSONALISED  
MENTORSHIP &  
DOUBTSOLVING  
SUPPORT**



**SPECIALISATION  
CERTIFICATION  
BY UPGRAD**



**MAKING  
STUDENTS  
INDUSTRYREADY**





**GLOCAL**  
UNIVERSITY  
SHAPING GLOBAL MINDS



# B.Tech.

in Computer Science with  
specialisation in  
full Stack Development  
(Software Development)

in collaboration with :

**upGrad**  
RAHO AMBITIOUS

## PROGRAM DETAILS

PROGRAM STARTS  
September 2020

### WEEKLY COMMITMENT

Per elective: 6 hours per week

### PROGRAM FEE

₹1,60,000 (Per Year)

### DURATION

4 years (900+ hours)

## PROGRAM FLOW

### 1<sup>st</sup> year

#### FOUNDATIONS OF PROGRAMMING

### 2<sup>nd</sup> year

#### PYTHON FOR ML

- Introduction to python
- Python for machine learning
- Data cleaning in python

#### STATISTICS & EDA

- Inferential statistics
- Hypothesis testing
- Exploratory data analysis

#### SQL & VISUALUTION

- Data analysis using sql
- Advanced sql
- Data visualisation in python
- Visualisation using tableau

#### MACHINE LEARNING I

- Linear regression
- Logistic regression
- Naive bayes
- Clustering

### 3<sup>rd</sup> year

#### MACHINE LEARNING II

- Model selection
- Advanced regression
- Support vector machines
- Tree models

#### NATURAL LANGUAGE PROCESSING

- Basics of text processing
- Lexical processing
- Syntax and semantics
- Chatbot case study

### 4<sup>th</sup> year

#### BIG DATA ANALYTICS

- Hadoop
- Sqoop
- Hive
- Spark
- Spark - case study

#### DEEP LEARNING

- Neural network and perceptron
- Convolutional neural networks
- Recurrent neural networks

APTITUDE • CAREER RELEVANT SOFT SKILLS • MOCK INTERVIEW • GROUP DISCUSSION



#### REAL-LIFE INDUSTRY PROJECTS

Learn through  
real-life industry  
projects spon-  
sored by top  
companies across  
industries



#### PERSONALISED MENTORSHIP & DOUBT-SOLVING SUPPORT

Attend regular live  
sessions by industry  
experts. Get personalised  
feedback and timely  
doubt resolution



#### SPECIALISATION CERTIFICATION BY UPGRAD

Get a specialisation  
certificate  
in ML-AI and  
upGrad  
alumni status



#### MAKING STUDENTS INDUSTRY-READY

Earn 360-degree  
career support  
with upGrad and  
interview opportu-  
nities from 250+  
hiring partners

## WHY MACHINE LEARNING & AI WITH UPGRAD

# DEPARTMENT OF PETROLEUM ENGINEERING



The Department of Petroleum Engineering aims to shape dynamic petroleum engineers with a sound knowledge of basic sciences and their applications to address the complex and changing nature of oil fields and the variety of practical problems emanating there from.

## INDUSTRIAL VISITS



Visit to Fossil museum  
and GSI, Himachal Pradesh



Field Visit to Hathnikund  
Geological Site with  
Petroleum Engineering Students



Industrial Visit to ONGC  
Dehradun on Reservoir Simulation

## INTERNSHIPS

- Collaborating with V-Lab college of engineering, Pune under MHRD Project.
- Collaborating with simulation lab of SIMPRO info system pvt. Ltd., Chennai

## EVENTS-CAREER COUNSELLING



## BOS MEETING

## DIGNITARIES' VISITS



**PROF JIE ZHANG**  
On Surface Imaging  
Technologies



**DR. NAJAM SARDAR**  
Associate Professor  
Dept. of Petroleum Studies,  
AMU Crude Oil Processing  
and Refining

## COURSES OFFERED

<b>B. Tech</b> in Petroleum Engineering	(4 years)
<b>M. Tech</b> in Petroleum Engineering	(2 years)
<b>Ph.D/M.Phil.</b> in Petroleum Engineering	

## LABORATORIES

- Petroleum Testing Laboratory
- Geology I Geophysics Laboratory
- Drilling Laboratory
- Heat Transfer Laboratory
- Well- control Laboratory



## PLACEMENT HIGHLIGHTS

(Batch 2017-18)

## OILSERV

OiiServe Oil Field Services Ltd., UAE  
Post:- Well Testing Trainee  
Annual Package Offered

**15 Lacs Per Annum**



**Azam Rehman**  
B.Tech. Petroleum



**Samrej Khan**  
B.Tech. Petroleum



**Abu Muhammad**  
B.Tech. Petroleum



**Jiyal Haq**  
B.Tech. Petroleum



**Salman**  
B.Tech. Petroleum



# DEPARTMENT OF ELECTRONICS & COMMUNICATION ENGINEERING



The School promotes Centre Of Innovation (COI) with vision of university "Global canvas, Local colours" located in the main academic area, School of Technology, in the beautiful The Glocal University Campus. COI was started in 2016 with an objective to be a forum for creative output of the potential engineers with world class skills in research and innovation. It provides students the necessary platform for realizing their theoretical ideas for converting into practical realities. A great workspace providing platform for ample guidance from faculty & senior-students and the enthusiasm and dedication of the COI team making centre a gifted asset for students.

## RESEARCH & PROJECT

- Design and integration of Carbon Nanotube/ultra-low -k materials for next generation integrated circuits. (Submitted at DST under Nano-Mission, Status: under review) Duration 2 years, cost-40.40 Lakhs.
- Design and integration of Non-Plasmonic Nano Antenna for Information Processing, Bio-Detection and nonlinear spectroscopy Applications. (Abstract submitted at DST under Nano-Mission) Duration: - 3 years, cost-50 Lakhs.

## HIGH QUALITY ACADEMIC PROGRAMS, STUDENTS & FACULTY

Faculties keeping in pace with Research and Innovation with the changes occurring globally in the field of Engineering and Technology. Novel Project based Practical Learning with emphasis on research & Industry oriented teaching in Amphitheater class rooms, Ultra Modern. Labs and Workshops.

## SPECIAL COACHING

Coaching of GATE, Indian "Engineering Services, PSU's etc provided to students on campus

## INDUSTRIAL VISIT

### Semi-Conductor Laboratory

(Under Department of Space, Government of India) Mohali & Sukhna Lake, Chandigarh.

### Railway EMU Workshop at SRE

Exposure on Practical working of Electronics and Electrical Systems in Railways.



## ELECTRONICS PROJECTS EXHIBITION



Inaugurated by: **Dr. Manish Hooda, Scientist (ISRO)**, Technology Development Division, Semi-Conductor Laboratory (Dept. of Space, Govt. of India) Mohali and Prof. (Dr.) Brajesh Kumar, Associate Professor, Dept. of ECE, IIT Roorkee, India.

## COURSES OFFERED

### B. Tech

in ECE

(4 years)

### M. Tech

in ECE

(2 years)

### Ph.D/M.Phil.

in ECE

## LABORATORIES

- Basic Electronics Laboratory
- Analog Electronics Laboratory
- Digital Electronics Laboratory
- Network Analysis Laboratory
- Microprocessor & Micro controller Laboratory
- Electronics Instrumentation Laboratory
- Digital Communication Laboratory
- Microwave Laboratory
- VLSI Design Laboratory
- PCB Making Laboratory
- Software/Simulation Laboratory



## WORKSHOP ON PRINTED CIRCUIT BOARD DESIGNING





# DEPARTMENT OF COMPUTER SCIENCE & ENGINEERING



The Department of Computer Science and Engineering educates future computer Engineers and scientists. The curriculum of department is designed with special emphasis on a systems approach, algorithmic thinking and a knack to find the best and fastest fit for an application. As programs and applications become more user-friendly, it is the exceptions that are taught and also how to use little-known features. The science of computing is addressed with a heavy emphasis on the science part.

## WORKSHOP & ACTIVITIES



**WORKSHOP ON ASP.NET**



**HACKATHON  
GLOCAL PROJECT FACTORY**



### TECHACK

An Ethical Hacking Workshop Held  
At Glocal Campus



### ROBOTRYST

An Ethical Hacking Workshop Held  
At Glocal Campus



**LAN GAMING TOURNAMENT**



**WORKSHOP ON MICROSOFT  
BASED TECHNOLOGY**

## COURSES OFFERED

<b>B. Tech</b> in Computer Science & Engg.	(4 years)
<b>M. Tech</b> in Computer Science & Engg.	(2 years)
<b>BCA</b> Bachelor of Computer Application	(3 years)
<b>MCA</b> Master of Computer Application	(3 years)
<b>Ph.D/M.Phil.</b>	

## LABORATORIES

- Computer Programming Lab
- Data Structure Lab
- Web Technology Lab
- Operating System Lab
- Internet Lab
- Computer Graphics Lab
- C++ Lab
- Core Java Lab
- Computer Fundamental Lab
- Mobile Application Development Lab
- R Programming Lab



## INDUSTRIAL VISIT



Industrial Visit to Sebiz Infotech Mohali IT Park

## IT INDUSTRY TRENDS & DEVELOPMENTS

The face of IT is changing rapidly and there's no going back. As a direct result of current economic necessities and ongoing technological developments, the IT industry is undergoing a number of fundamental shifts. In order to remain relevant to their clients and customers, it is increasingly important for businesses to monitor these developments closely, adapting essential products and services to meet new marketplace demands.



# DEPARTMENT OF MECHANICAL ENGINEERING



Mechanical Engineering is one of the broadest and evergreen branches of engineering. Mechanical engineers are involved with various sub sectors of industries like thermal power generation, manufacturing technology, Industrial Engineering, Automobile systems, refrigeration and air conditioning systems design etc. It also provide the comprehensive knowledge of conventional and advance topics like 3-D printing, Robotics and automation, Rapid Prototype etc. Mechanical engineers are involved with the design, analysis, testing, control, operation and implementation with the recent software tools and technology. The physical system that the world uses is designed and developed by the concepts of Mechanical Engineering.

## VISION

The Mechanical Engineering Department is to be preferred as a destination for students, researchers, and faculty member by providing outstanding subject knowledge with overall personality development and career growth with entrepreneurial skills.

## MISSION

- To impart quality education to the students through innovative techniques for enhance their interpersonal skills.
- To develop skilled Engineers to compete with upcoming challenges faced by industries and society.
- To cherish research environment in the Department of Mechanical Engineering.
- To continuously upgrade the quality of education and infrastructure of the Department of Mechanical Engineering in order to impart up to date knowledge to the students.

## CENTER OF EXCELLENCE:

It is a part of department which uplifts the technical skills of students .In this center of excellence students learn about the recent skills required in the field of core mechanical industries like automotive industries, Heating Ventilation and Air conditioning area, computer numerical control production system. For these skills we are providing the trainers and all required facilities.



## OFFERING LATEST COURSES:

Department offers latest courses linked with curriculum like Robotics, Composite Materials, Heat Exchanger Design, and Renewable Energy resources etc. Our students learn about what exactly the industry demand. Board of studies comprises one member from industry who advices the changes in curriculum as per the current industry need.

## TRAINING IN INDUSTRY/ RESEARCH INSTITUTION

Department arranges summer internship training, short term design based software training, technical skill based training and industrial visit to provide the industrial exposure with industry and research institutions. Some of the students are placed in good multinational companies on the basis of these activities.

## INDUSTRIAL VISIT E-Durables Company

Sela Qui Industrial Area Dehradun

The company is a leader in original design and equipment manufacturing and has a clientele which includes segment leaders in home appliances and air conditioner branding

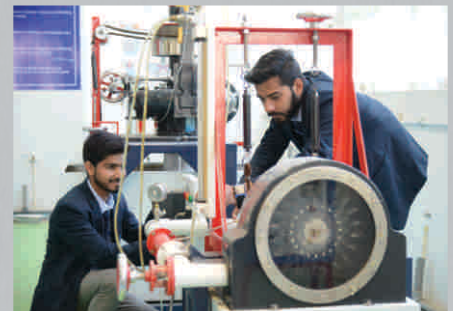


## COURSES OFFERED

<b>B. Tech</b> in Mechanical Engineering	(4 years)
<b>M. Tech</b> in Mechanical Engineering	(2 years)
<b>Ph.D/M.Phil.</b> in Mechanical Engineering	

## LABORATORIES

- Fluid Mechanics laboratory
- Fluid Machinery laboratory
- Applied Thermodynamics laboratory
- Heat Transfer laboratory
- Strength of Materials laboratory
- Theory of Materials laboratory
- Theory of Machines laboratory



## INTERNATIONAL CONFERENCE

Faculty members and students regularly present their research in national/international conferences.

## PLACEMENT:

Most of the students are got placed up in final year in renowned mechanical core companies on the basis of technical skills in respective field like automotive sector, heating ventilation and air-conditioning field, designing and production based industries. Some of the students got selected for the higher studies at IIT's, NIT's, IIM, central universities

# DEPARTMENT OF CIVIL ENGINEERING

At the Department of Civil Engineering our vision is to make our programs count among the best civil engineering programs in India and abroad and we are making steady progress towards the realisation of this goal! The Department of Civil Engineering strives to graduate highly qualified engineers, maintain nationally recognized research and provide quality professional and community service to the region and the world.

## CLUB & ACTIVITY

**Construction site visit:** Included in academic curriculum and daily activity to provide real time practical exposure of construction sites inside and outside of the campus.

**Industrial visit:** For exposure of renowned industries such as Cement production, pulp and paper, sewage treatment plant, hydroelectric power plants. Recent visits Khara power plant and Chilla range (Uttarakhand)



## JOB OPPORTUNITIES

Build your dreams with us...

STATE GOVERNMENT	PSU's	CENTRAL GOVERNMENT	PRIVATE SECTOR	ACADEMIC SECTOR
Irrigation PWD RVNL AVP RES RNN PCL JAL Nigam SBCL PHED	NHAI NTPC BHEL IRCON RITES NBCC NALCO SAIL CIL ONGC	IES Indian Railways SSC JE DMRC CPCB BARC DRDO ISRO BRO	Get self employed in Construction Designing & Consultancy  Larsen & Toubro Tata Group, Jaiprakash Associates Lanco Infratech, Reliance Infrastructure Limited, Hindustan Construction Comp., Gammon, Afcons, Shobha Developers, Punj Lloyd	Research Assistant Lecturer Assistant Professor Associate Professor Professor

## INDUSTRIAL VISIT

Educational Trip to a  
construction site & Barla Village



## SURVEY CAMP

Seven Day Survey Camp  
Near Shakumbhari Devi Temple Area



## COURSES OFFERED

<b>B. Tech</b> in Civil Engineering	(4 years)
<b>M. Tech</b> in Civil Engineering	(2 years)
<b>Ph.D/M.Phil.</b>	

## LABORATORIES

- CAD Lab
- Surveying & Geoinformatics Lab
- Strength of Materials Lab
- Fluid Mechanics Lab
- Hydraulic & Hydraulic Machine Lab
- Building Material & Construction Lab
- Structural Analysis Lab
- Geotechnical Engineering Lab
- Transportation Engineering Lab
- Environmental Engineering Lab



**CIVIL ENGINEERING  
HIGHEST PACKAGE  
2017-18**



**M. Atif Usmani**  
(B.Tech.Civil)  
₹ **9Lacs** P.A.  
Placed In: **BYJU'S**



**Anurag Singh**  
(B.Tech.Civil)  
₹ **9Lacs** P.A.  
Placed In: **BYJU'S**



# GLOBAL SCHOOL OF POLYTECHNIC

At the Glocal School of Polytechnic we focus on 'knowledge' and 'learning'. We have a holistic approach to student's overall development and we impart program and project based learning to facilitate deeper understanding of engineering and science concepts. We encourage multi-disciplinary teaching, learning and research which provide an enriching academic environment. We are committed to develop a strong research culture among our staff and students and are developing a world class infrastructure with the aim to attract the best staff and students locally and from across the country and the world. Glocal School of Polytechnic aims at spearheading research and innovation in emerging areas of Electrical, Mechanical, Civil, Electronics & Communication and Computer Science & Engineering and to create an enabling environment to train innovative, capable and highly motivated intellectual manpower to meet India's technological needs in close partnership with the industry.



## INDUSTRIAL VISIT

Glocal School of Polytechnic organized industrial visits as per the curriculum. Industrial visit focuses on preparing the students to learn about the day-to-day workings of a particular industry and understand its operational issues.



## FRESHERS PARTY



## PROJECTS



## CAMPUS PLACEMENT



## COURSES OFFERED

- Diploma in Civil Engineering
- Diploma in Mechanical Engineering
- Diploma in Computer Science and Engg.
- Diploma in Electronics and Comm. Engg.
- Diploma in Electrical Engineering.

## LABORATORIES

- CAD Lab
- Surveying & Geoinformatics Lab
- Strength of Materials Lab
- Fluid Mechanics Lab
- Applied Thermodynamics Laboratory
- Heat Transfer Laboratory
- Computer Programming Lab
- Data Structure Lab
- Web Technology Lab
- Basic Electronics Laboratory
- Analog Electronics Laboratory
- Digital Electronics Laboratory
- Basic Electrical Lab
- Electrical Machines (IITR) lab
- Substation Automation lab





# GLOCAL SCHOOL OF LIFE AND ALLIED HEALTH SCIENCES

The Glocal School of Life and Allied Health Sciences was started in May 2014 with the aim of producing highly trained professionals in various branches of the Biological Sciences. The main objective of the School is to provide academic training and research in the interdisciplinary areas of life sciences with a focus on extending the awareness generated from these studies to the growth of technologies.



## COURSES OFFERED

**B.Sc.** (Hons) Biotechnology

**B.Sc.** (Hons) Microbiology

**M.Sc.** Biotechnology

**M.Sc.** Microbiology

**Ph.D.** Life Sciences

## MENTORSHIP & TRAINING

Our faculties have developed training based teaching modules for the students in interdisciplinary areas like Industrial Biotechnology, Biomedical Engineering, Medical Biotechnology, Immunotechnology etc. to produce highly trained professionals. Our curriculum and tutorial modules have been designed to equip the students to qualify various competitive exams such as GATE and NET with high scores. Moreover, the School also puts emphasis on students attending seminars, workshops and conferences, along with summer research internship, for a holistic learning experience. The School provides studies based on generating knowledge and collaborative learning in latest research trends supported by academic staff and by flexible computer-based interactions. The Scholars of the school are encouraged to participate in conferences, workshops and seminars for their exposure to the world.

## RESEARCH IN THE SCHOOL:

School is actively engaged in the Biological and allied health research and training programme. Faculty and students of the school worked on the various in-house research and trainings such as cancer research, immunomodulation, diabetes, plant and animal biotechnology, nanotechnology, clinical biochemistry, molecular biology, in-silico biology, microbiology, pathology, environmental microbiology and biotechnology etc. School of Life Sciences has over 300 publications in the journals of international repute.

## EDUCATIONAL VISIT

The Glocal School of Life and Allied Health Sciences organized educational visits to the national laboratories, research centers, academic institutes and innovative industries for the healthy exposure of students such as Pharma Industries, IIT, FRI, ZSI, IGIB, IARI, IMTECH, BSI and AIIMS.

## STUDENTS PROJECTS:-

- The Growth Enhancement of *Cynobacteria* in *In-vitro conditions* and their identification
- Isolation and characterization of *E. Coli* from different samples of Glocal Hospital and University.
- Effect of stress compounds and PGPR's on the growth of *Pisum sativum*.
- Application of Bioinformatics tools in biological characterization of proteins.
- *In-silico characterization of compounds for diabetes melites type 2.*
- Evaluation of antibacterial efficacy of *Thuja Occidentalis*





# GLOCAL SCHOOL OF PHARMACY



Glocal School of Pharmacy, Glocal University was established in 2014 with a proclaimed objective of becoming a centre of excellence in Pharmaceutical Sciences. The Glocal School of Pharmacy is committed to imparting excellent education to students for their growth and development. The curriculum is designed to suit the research, academia, the pharmacy community and industrial requirements. Quality education is seeded, nourished and kept viable by the young, dynamic and well qualified faculty members of the School. Novel teaching methodologies are used by the faculty members to ensure that students learn quickly and effectively. The School also provides and scholarships to meritorious students.

## CAREER IN PHARMACY

- Pharmaceutical Production
- Pharmaceutical Marketing
- Quality Assurance & Quality Control
- Drug Regulatory Affairs
- Drug Analysis
- Community Pharmacist
- Pharma Journalism
- Pharmacovigilance
- Teaching & Research
- Patenting
- Hospital Pharmacist
- Hospital Management

## AWARDS



### *Nirali Recognition Award*

**Dr. Satish Sharma, Dean,** School of Pharmacy, has received 'Nirali Recognition Award' in New Delhi for outstanding contribution towards pharmacy education and research.

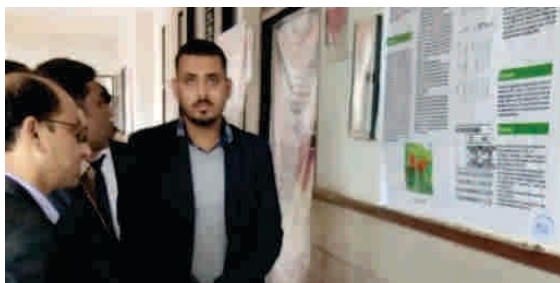
### *International Award*

'It's a matter of great delight and pride that Sani Rabi (B. Pharm II year student) of School of Pharmacy, Glocal University got first prize (**International Award**) in oral presentation session during International Conference at KIET School of Pharmacy. The awardee was duly guided by our two senior faculty namely Ms. Suruchi Singh and Mr Pankaj Bhatt for preparing and presenting his paper. Hearty Congratulations to Sani Rabi and his guides".



### *National Award*

"**Vasu Chaudhary** (B Pharm IV yr student) got 2nd position in poster presentation in National Conference held at Future Group of Institutions, Bareilly. The awardee was guided by Mr. Pankaj Bhatt and Ms. Suruchi Singh"



## COURSES OFFERED

<b>B. Pharm.</b>	(4 years)
<b>M.Pharm.</b> in Pharmaceutics	(2 years)
<b>M.Pharm.</b> in Pharmacology	(2 years)
<b>D.Pharm.</b>	(2 years)
<b>Ph.D</b>	

## LABORATORIES

- Pharmaceutics laboratory
- Pharmaceutical chemistry laboratory
- Pharmaceutical analysis laboratory
- Pharmacology laboratory
- Pharmacognosy laboratory
- Pharmaceutical biotechnology laboratory
- Cental Instrumentation Facility
- Research Lab
- Museum and Animal House

**Dr Abdul Hafeez** presented a Poster entitled, "Formulation and Evaluation of Solid Lipid Nanoparticle (SLN) Based Topical Gel ". On 24th Annual Middle East largest event Dubai International Pharmaceutical & Technology Conference & Exhibition 25-27 February 2020, Dubai UAE.



**Dr. Abdul Hafeez** Presented the oral entitled Dacarbazine loaded stearic acid nanoparticle cream and its evaluation, He represented Glocal University among various Speakers and Delegates across the World. 20th Annual Pharma Middle East Congress, November 11-12, 2019 in Istanbul, Turkey







**Dr Rizwan Ahmad, Vice President, APTI was invited as a Guest Speaker during the 58th National Pharmacy Week celebration at Glocal School of Pharmacy, Glocal University**



**National Pharmacy Week** was celebrated at School of Pharmacy, Glocal University on 21st November 2019. The global theme for this year was, "Pharmacist's role in Patient's Safety and Efficacy of Medicine".



**Pharma model competition during National Pharmacy Week Celebrations at School of Pharmacy, Glocal University**

Observing the vision of International Pharmaceutical Federation (FIP), the School of Pharmacy at Glocal University celebrated World Pharmacist Day.



**HEALTH AWARENESS CAMP**



**PHARMA EXHIBITION**



**WORLD PHARMACIST DAY CELEBRATIONS**



**PHARMA EXHIBITION**



**PHARMA RANGOLI COMPETITION**



**PHARMA EXHIBITION-PHARMA INDUSTRY**

## PUBLICATION

**Dr. Abdul Hafeez** co-author with Asim Azhar, Ghulam Md Ashraf, Asma Perveen, on Frontier View on Nano technological Strategies for Neuro-therapypublished in Current Drug Metabolism, 2018, DOI:10.2174/1389200219666180305144143. [ IF 2.97 ]

**Iqra Rahat** co-author with Mohammad Taleuzzaman on "Patent Application Preparation and Filing".DOI: 10.5772/intechopen.88377

**Dr. Abdul Hafeez**, co-author with Mahfoozur Rahman, Fahad A. Al-Abbasi, Othman Baothman, Vikas Kumar on "Implication of Nano-antioxidant Therapy for treatment of Hepatocellular Carcinoma using PLGA Nano particles loaded Rutin<sup>doi</sup> /10.2217/nmm-2017-0306.Future medicine [IF 4.8].

**Ms. Isha Talwar** participated in a National Conference on "Emerging Trends in Pharmaceutical Research and Innovations in Pharmaceutical Industry in Dev Bhoomi Institute of Pharmacy & Research, Dehradun on March 7, 2019.

## INVITED TALK

**Dr. Satish Sharma** invited as speaker at International Conference held in Bangkok, Thailand. Dr.Sharma spoke on 'Role of Nutraceuticals in health promotion and disease prevention'.



## POSTER PRESENTATION

**Dr Abdul Hafeez** on "Delivery of Dacarbazine nanoparticle amalgamated with dermal cream for the treatment of Melanoma: "6<sup>th</sup> World Congress on nano-medical sciences", January 7-9, 2019 at Vigyan Bhawan, Delhi.

Iqra Rahat on "Formulation of thymaqqinone loaded chitosan lipid vesicle"" in the 7th International Congress of the Society for Ethnopharmacology, Feb 15-17 2020 held in Jamia Hamdard, New Delhi.



## ORAL PRESENTATION

**Dr Abdul Hafeez** entitled "drug loaded nanoparticle gel effective for anti fungal infection", on Sep 24-25, 2019 in Uttranchal University, Dehradun.

**Dr. Satish Sharma** invited as speaker at International Conference organized by Chitkara University, Chandigarh, India. Dr Sharma spoke on 'Cardio-Protective Potential of Nutraceuticals: An Evidence Based Approach'.



# GLOBAL SCHOOL OF BUSINESS & COMMERCE



## COURSES OFFERED

**MBA (Dual Specialisation)**  
Finance/Human Resource/ Marketing

(2 years)

**BBA**

(3 years)

**B.Com. (Hons.)**

(3 years)

**Ph.D/M.Phil.**  
in Management

## CURRICULUM PEDAGOGY

### GLOBAL STANDARDS

Our academic programs have been drawn up after much deliberation and conform to global standards. Guided by a team of highly qualified and experienced faculty members, students develop a nuanced understanding of concepts and acquire skills to apply them to concrete situations with a sense of social responsibility.

### DUAL SPECIALIZATION

Students have the opportunity to get a dual specialization from the areas of Marketing/Finance & Human Resource. Value added programs such as SAP/ ERP & Tally are taught to the students. Choice based credit system : To enhance flexibility in the education system, students have the opportunity to choose electives from the above areas in the final year of their studies.

### FOCUS ON ANALYTICAL SKILLS

Our teaching pedagogy includes case study, business simulation and group exercise to foster analytical thinking among the students. This ensures active participation of students making for a lively classroom discussion .

### LIVE PROJECTS

We believe management practices can only be learned by doing. Thus, we have made live project as an integral part of the curriculum to foster practical application of knowledge gained in the classroom.

### FOCUS ON ENTREPRENEURSHIP

To cater to the need of the hour, we have incorporated "Entrepreneurship & Business Development" as a core course in both UG and PG programs.

### INTERNATIONAL TIE-UPS

We have taken initiatives to tie-up with foreign universities in the United Kingdom, Italy and Sweden where our students get opportunity to have international experience through student and academic exchange program.

### FOCUS ON PERSONALITY DEVELOPMENT

We have incorporated "Personality Development Program" in the credit system, as well as a separate skills development module ensuring development of interpersonal skills much required for managerial positions.

## INDUSTRY INTERFACE

### 100% PLACEMENT

The school extends placement and career guidance services to all its graduating students. We have achieved 100% placement since inception for our UG and PG programs.

### INDUSTRY VISITS

We organize industry visits for our students where they learn best management practices by interacting with practicing managers and observing various business processes.

### CORPORATE GUEST LECTURES

We have taken an initiative "Speaking from Experiences lecture series"- a platform where senior professionals from industry share their experiences with our students.



DEWANG MEHTA

**NATIONAL  
AWARD**

FOR BEST EMERGING  
B-SCHOOL



# RESOURCE & INFRASTRUCTURE

## HIGHLY QUALIFIED FACULTY MEMBERS

We have competent faculty members from IIM/IIT/Top universities who act as the mentors. We provide the resources and the academic milieu for an intellectually rewarding teaching and research career.

## WORLD CLASS FACILITIES

The university is spread over 350 acres of lush green campus in the foothill of the Shivalik range with facilities like smart classrooms, state-of-the-art library, hostels, play grounds, gym, super speciality hospital, ATM etc.

## THE AMPHITHEATRE

The university is equipped with an open amphitheatre with more than 5000 seating capacity that is used to conduct outbound group activities, cultural activities, exhibitions, and education fairs.

## ON-CAMPUS RESIDENTIAL FACILITY FOR FACULTY

The university provides on campus residential facility for all of its faculty members to ensure 24x7 mentoring support to the students.

# PROFESSIONAL & HOLISTIC GROWTH

## VALUE ADDED CERTIFICATIONS

We have identified some high-thrust areas like Business Analytics, Market Research, Digital Marketing, Six Sigma etc. which are in high demand in industry. We provide certificate programs on these areas to ensure our students stay updated with the latest industry trends.

## INTERVENTIONS

We have established "The Glocal Project Factory" - a platform in which students get an opportunity to work in interdisciplinary teams on projects that are aimed to develop products or services beneficial to the society.

## DEVELOPING VOCATIONAL SKILLS

We have established "The Glocal Skill Centre" where students are provided with vocational training that plays a great role in their overall development.

## THE BUSINESS INCUBATOR

This gives a platform to our students to realize their entrepreneurial dreams where they work on idea generation, product development to business plan implementation.

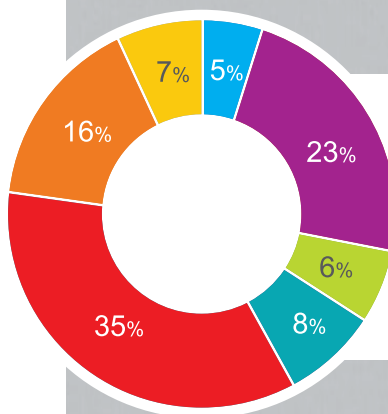
# EXTENSIVE PLACEMENT TRAINING & SUPPORT

- RECRUITMENT EVENTS
- NETWORKING
- RESUME
- INTERVIEW CLINICS
- GD WORKSHOPS
- INTERNSHIPS
- JOB POSTINGS
- CAREER SKILLS WORKSHOPS
- JOB FAIRS
- CAREER ADVISORY

**SMALL BATCH SIZE**  
**ENSURES**  
**100%**  
**PLACEMENT ASSISTANCE**

- Education
- Real Estate
- FMCG
- Finance/ Financial Services
- Customer Services
- Digital Marketing
- Health

BYJU'S, FACE  
Wealth Clinic  
ITC  
American Express, Karvy, Axis Bank  
Just Dial  
Ango Health  
Grand Slam Fitness, Ango Health



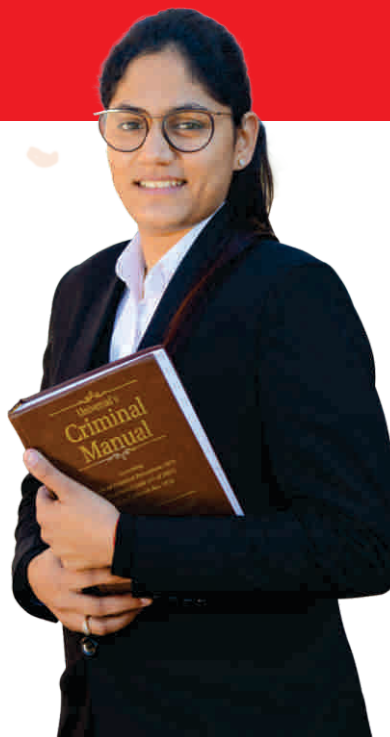
**RATED AA+**

**BY CAREERS 360 INDIA'S TOP  
B-SCHOOLS 2017  
(EDITION: NOV 2016)**



## A THIRD GENERATION LAW SCHOOL

- Taking Law from Classes to Masses
- Integration of Bar and Bench
- Celebrating Diversity, Embracing Knowledge
- Imparting Justice Education
- Law is the Language of Power
- Law is the Language of Greatness



Welcome to the Glocal Law School, a promising institution of legal education in Uttar Pradesh. Glocal Law School at Glocal University is functioning with a mandate to transform and redefine the quality of legal education in India.

### COURSES OFFERED

<b>BBA.LL.B.</b>	(5 years)
<b>B.A.LL.B</b>	(5 years)

**Competent Faculty**  
Quality of legal education at par with National Law Universities.

**Free Coaching**  
for Union & Judicial/ Administrative Services

**Emphasis on Internships &**  
Moot Courts from first semester.

**International Exposure**  
through participation in Summer Schools, Conference & Seminars.

**Scholarships**  
to girls, SC/ST/OBC/ Minority and meritorious students



#### DR. YOGESH PRATAP SINGH

"The Paradoxes of Indian Saga of Development: The Judicial Perception" in 11th NAPSIPAG International Conference in Dhaka, Bangladesh



#### PROF. KHALID ANIS ANSARI

Presenting his paper in an International Conference on 'Pluralism & Secularism' organized by the University of Humanistic Studies, Netherlands



#### PROF. AYAZ AHMAD

Presenting his paper in Summer School on Pluralism organized by University of Free State & HIVOS Bloemfontein, South Africa



**Students of Glocal Law School participated in International Summer school in University of Free State, South Africa**

### SPECIAL LECTURE SERIES



#### Mr. Rajiv Singh

Assistant commissioner (Govt. of Bihar) delivered a lecture on "The Politics of Social Justice"



#### Prof. K.A. Pandey

Associate Professor (NLU, Lucknow) delivered a lecture on "Criminal Law"



#### Ali Anwar Ansari

MP (Rajya Sabha) and President All India Pasmanda Muslim Mahaz delivered a mesmerizing lecture on "The Politics of Social Justice"





Glocal Law School hosted numerous dignitaries from bar, bench, legal academia, students, researchers and experts of judicial studies in the National Conference on "Judicial Dissent: A Conceptual and Contextual Audit of the Decision Making in the Supreme Court of India."

**Justice V. Gopala Gowda**  
of Supreme Court inaugurated the Conference and

**Justice Mohd. Tahir**  
Judge High Court of Judicature at Allahabad also participated in the Conference.

Law is the language of Greatness

## Career Prospects for Law Graduates in 21st Century

In the 21<sup>st</sup> century liberalized and globalized India, law has emerged as a dynamic career option offering full expression to the potential of an individual.

Government Sector	Private Sector	United Nations & Other International Organization
State Judicial Services (Civil Judge/ Magistrate)/ Union Judicial Services Higher Judicial Services	Law Officer/Assistant Manager (Law) in various companies	Law Officer/Legal Adviser
Law Officer in Various Departments of State Government	Legal Manager/ Legal Researcher in Multi-National Companies(MNCs)	Legal Manager/ Law Assistant
Assistant Public Prosecutor in different Courts	Law Researcher/ Corporate Lawyer in Law Firms	Project Director (Legal Affairs Related)
State Judicial Academy- Research Assistant/Legal Assistant	Law Officer in Insurance Companies such as LIC, Kotak Mahindra etc.	Legal Consultants
Army Law Officer Correctional/Prison Service- Law Officer	Law Officer in Private Sector Banks (ICICI, HDFC, IDBI, AXIS Bank, etc.)	Lawyers are the highest tax payers
Police Services-Assistant Prosecution Officer Labour Inspector	Law Reporter in News Agencies viz. Times of India, Hindustan Times Hindu, Indian Express etc.	
Assistant Director/Deputy Director in various Commissions/ Tribunals	Academic Sector	
Law Officer in Public Sector Banks (SBI, Union Bank, BOB, Allahabad Bank, OBC, etc)	Research Assistant/ Assistant Professor Associate Professor/Professor	





# GLOBAL SCHOOL OF AGRICULTURAL SCIENCES

The school of Agricultural sciences envisages to provide foundation for knowledge-led, technology drive, intellectually satisfying and economically rewarding enterprise, for ensuring livelihood security and improved quality of life of people. The school aims to achieve excellence and relevance in education through technology development, dissemination and knowledge management in agriculture.



## RESEARCH CENTRES

Faculty of the school supervise the functions of following proposed research centers that offer the ground for evaluation and validation of agro technologies.

CROP RESEARCH CENTRE

HORTICULTURE RESEARCH CENTRE

VEGETABLE RESEARCH CENTRE

AGRO-FORESTRY RESEARCH CENTRE

MEDICINAL RESEARCH & DEVELOPMENT CENTRE

MODEL FLORICULTURE CENTRE

## SPECIAL FEATURES

### REGULAR UP-GRADATION OF COURSE CURRICULAR:

- Fourth Dean's committee
- recommendations of ICAR for revised undergraduate program for the course and curriculum have been implemented from 2015-16
- 200-210 net instructional days
- Course work 165-170 credit hours
- Personality development

### PRACTICAL TRAINING

- Practical Crop Production (PCP)
- Earn while you learn program
- Work program
- Rural agricultural work experience (RAWWE)

### PRACTICAL CROP PRODUCTION (PCP)

- PCP for two semesters based on the model of GB Pant university of Agriculture & Technology, Pantnagar.
- Inculcates team spirit and dignity of labor
- 1.0 ha. Land to a team 6-8 students is allotted
- Experimental learning through earn while you learn



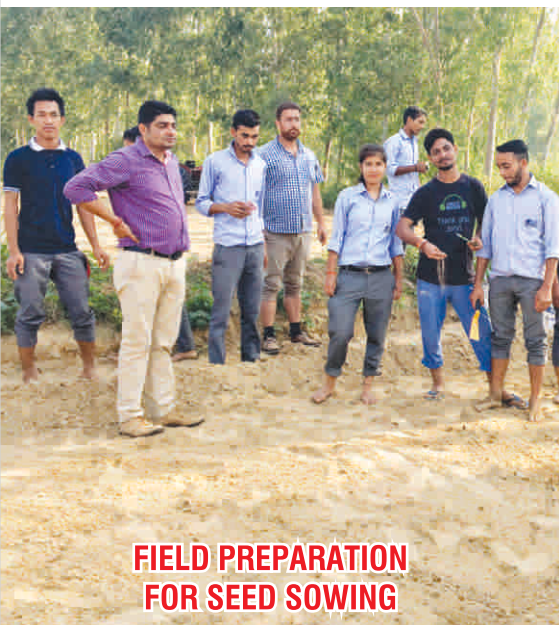
## COURSES OFFERED

<b>Diploma</b> in Agriculture	(1 years)
<b>B.Sc.</b> Agriculture	(4 years)
<b>M.Sc.</b> Agronomy	(2 years)
<b>M.Sc</b> Environmental sciences	(2 years)
<b>Ph.D.</b> in Agricultural Science	

## EDUCATIONAL VISIT







**FIELD PREPARATION  
FOR SEED SOWING**

## RESEARCH SPECIALIZATIONS

Plant Physiology, Stress Physiology, Plant Biotechnology, Molecular Biology, Nematology,, Biochemistry, Genetics & Plant Breeding, Microbiology, Entomology and Plant Pathology, Seed Technology and Soil Analysis.

More than 150 research publications in reputed international and National Journals.

### Field projects

#### Development of Crop Research Centre.

- Organic Farming on low cost methods
- soil water relation
- Insect pest management
- Demonstration Unit for farmers

#### Development of Arboretum

- Exotic & Indigenous species
- Propagation of important medicinal plants
- Economically important bamboo species
- Multipurpose Tree Species
- Energy and Soil Conservation Species
- Leguminous Tree Species



**FIELD PREPARATION FOR  
ORGANIC FARMING**



**AGRICULTURE FIELD VISIT**



**GEOLOGICAL STUDY TOUR**



**INTERACTION WITH LOCAL FARMERS**



**IDENTIFICATION OF INSECT PEST**



**STUDY OF AGROFORESTRY SYSTEMS**



**STUDY OF SOIL EROSION**

## CAREER OPPORTUNITIES

### GOVERNMENT SECTOR

- Indian Council of Agricultural Research
- State Agricultural Departments
- Banking Sector
- NABARD
- Seed Companies
- ICRISAT
- Agricultural Engineering: Corporations
- Farm Manager
- FCI, Govt. of India
- Technical /Scientific Assistants
- UPSC
- IAS, IFS, PCS etc

### PRIVATE SECTOR

- Private Banking Center
- Triveni Engg. & Industries
- Crystal Phosphates Ltd.
- Mahyco Seeds Ltd.
- Bayer Crop Science
- Thomson Reuters Group
- ISS Hicare
- IFFCO Kisan Sanchar Ltd.
- DSCL Sugar Group
- Simbhaoli Sugar Ltd.
- Savannah Sesds Pvt. Ltd.
- TECHNICO Agrisciences Ltd.
- Dhanuka Agritech Ltd.

### INTERNATIONAL ORGANIZATIONS

- UNDP
- IUCN
- WWF
- ICRISAT
- FAO
- UNEP



# GLOCAL SCHOOL OF EDUCATION

*A lamp can light another lamp only  
if it continues lighting itself*

~Rabindranath Tagore

## THE SCHOOL

**We teach as we learn, We learn as we teach**

Glocal School of Education was set up in 2015 under the aegis of Glocal University. Programs offered by School of Education are recognized by National Council for Teacher Education and University Grant Commission.



## OUR VISION

Demonstrate that teaching is as much a profession as any other.

Bring to the profession of teaching, dignity, social recognition and rewards so as to attract, over time, best of the university graduates to the teaching profession.

Empower Teachers; professionally and personally.

## OUR MISSION

To Collaborate with research, training organizations and individuals across the globe to bring the best practices in teacher preparation programs. To Collaborate with Schools and Institutions to institutionalize and embed innovation and change in school education and teacher preparation programs. Research and create new benchmarks in teaching as a profession of choice. To Evolve teacher preparation processes that promote a culture of research based teaching practices and a spirit of inquiry and reflection among the teaching professionals. To Recognize the enlarging role of technology in all educational practices.

Integrate pre- service teacher education program with school and educational reform efforts to Create and Build, Glocal School of Education as an innovator and leader in Teacher Education.



## THE INNOVATIONS

### SCHOOL BASED & SCHOOL INTEGRATED PROGRAM:

In a major departure from the existing practices, the programs are completely school based and integrated in the school curriculum. In so much as the medical colleges and hospitals function, the teacher candidates, while pursuing the program will be able to move to and forth from their own classrooms to the school classrooms, which could well serve as their learning laboratories. In doing so, they will be able to apply/test out the theories of learning in real life classrooms and be in a position to question them and find answers there to.

### PERSONAL EFFECTIVENESS OF THE TEACHER:

Teachers' persona is critical to connect meaningfully with the learner. Hence personal effectiveness of the teacher conditions the learning outcomes for students in classrooms. Amongst several other sub-components of personal effectiveness the teachers must have the following;

- Communication and Linguistic competence
- Self Awareness
- Social Awareness
- Self Management
- Relationship Management

Keeping this in mind, the strong focus of the school is on technology-enabled teaching-learning and Skill Building.

Almost 50% of the program time will be devoted to Learning by Doing, Observation, Experimentation, Action-research, Dissertation and Project-based learning.

## WHAT DEGREES DO YOU GET ?

### BACHELOR OF EDUCATION

(NCTE approved) – 2year

### DIPLOMA IN ELEMENTARY EDUCATION

(NCTE and SCERT approved)– 2 years

### MASTER IN PHILOSOPHY – 1 year

### DOCTOR OF PHILOSOPHY

### UPCOMING COURSES –

**BA B.Ed** – 4 year Dual Undergraduate degree in Social Science and Education

**B.Sc B.Ed** – 4 year Dual Undergraduate degree in Science and Education

## YOU CAN APPLY IF

You have previously completed graduation. For eligibility criteria follow NCTE norms.

## FINANCIAL AID

Financial constraints never became a hindrance for admissions in our school. We provide extensive need-based scholarships.





## COMMITTED FACULTY

Our faculty is well educated, experienced and meets the highest standards of teaching and research. They are fully committed towards working on student's success and enabling them to become a successful and responsible citizen of the world.

## CHOOSE ANY FUTURE YOU LIKE

Programs offered by the school will expand your possibilities. You will be equipped to become a teacher, teacher educator, college professor, e-learning educator, educational planner, education administrator, curriculum planner, education program manager, e-learning developer, counselor and special education expert.

## STUDENTS LIFE

The programs seek to provide a vibrant community life for students. Apart from academic learning the programs also seek to provide varied experiences out of the classroom to spark a life-long process of learning and exploration.



**INTERNATIONAL PEACE DAY CELEBRATION**



**WORKSHOP ON "ASSESSING PERSONALITY AND INTELLIGENCE LEVEL OF SCHOOL CHILDREN"**



**HINDI DIWAS CELEBRATION**



**UNDERSTANDING TEACHING –  
LEARNING IN PRATHMIK VIDYALAYA,  
MOHIDDINPUR VILLAGE, SAHARANPUR**



**YOUTH CAMP**



**MANN KI BAAT SESSION  
ON YOGA ORGANIZED IN  
PRATHMIK VIDYALAYA SHERPUR VILLAGE,**



**PUSTAK VITRAN, IN  
PRATHMIK VIDYALAYA,  
ROOPPUR BADSHAHI BAGH, SAHARANPUR**



**VISIT TO NATIONAL INSTITUTE OF  
VISUALLY HANDICAPPED, DEHRADUN**



**TREE PLANTATION DRIVE**



**EDUCATION FOR SOCIAL CHANGE**

The social aim of the school is to provide students with the opportunity of understanding the challenges of society and more specifically rural communities. The social learning experiences of the school focus on areas such as education, rural development, child development, human rights and many more.





# CO-CURRICULAR ACTIVITIES











## MERAKI 2020

The mission of Glocal University is to produce top-notch professionals who have a zeal for perpetual learning and are capable of performing well in diverse professional and cultural settings. While the university provides the students with all the tools required to successfully take on the world, we also endeavor to instill in them a healthy cultural rootedness that combines the best of traditional values with modern and progressive sensibilities.

The mission forms the backdrop of Glocal Youth Festival Meraki - 2020 a five - days extravaganza with theme Global canvas local colours- the reflection of our name, which includes 25+ events witnessing 3000 + crowd.

A complete blend of technical innovation, arts and cultural ethnicity enfolding different creative genres will be displayed during these five days, enthusiastically celebrating the cultural depth of Indian society. Showcasing the dance, music, poetry reading and creative arts, alongside technical workshops and expositions.

It also represents the essence of Indian community by bringing together students from all walks of life, in the spirit of unity and friendship & will draw patronage from a diverse population of artistic, through this fest we wish to promote the exchange of cultures, knowledge and practice in domain of performing arts.





## TECH FEST

Glocal believes in project-based learning approach and teaches its students as how technology can be inculcated in their daily work and lives. Based on this ideology, Tech fest was organized in Meraki-2020 that provides a multi school competitive platform in which all the schools of Glocal participated.

- Model Exhibition
- Live – Exhibition
- Junkyard Competition
- Decode The Errors
- Guess The Image
- Sheet Metal Product Making Competition
- Fix-Refix
- Vow-Coder

## CULTURAL FEST

Appreciating the performing arts and celebrating the culture of the world was always in the mind of student's cultural society, which involved all the international and national students on common cultural platform in Meraki-2020.

- Traditional Tattoo
- Best Out of Waste
- Jhankaar (Dance Competition)
- Movie Show
- Raag (Singing Competition)
- 60 Seconds To Fame
- Satyug (Theatre/Drama)
- Ad-Mad Show

## LITERARY FEST

Student literary society motivated the future writers, bloggers, debaters, politicians, leaders and readers by organizing literary events in Meraki -2020.

- Capture The Best Moment (Photography Competition)
- Bazm-e-Tehzeeb Season 2
- Vaad-Vivaad Pratiyogita (Debate Competition)
- Quizzeria
- Extempore



# MERAKI LIVE EXHIBITIONS







## ORIENTATION PROGRAMME-2019

An induction & orientation program was conducted by University on 26th and 27th August 2019 for the new students who took admission in University in the session 2019-20. The students were apprised with various facilities available in the University campus which shall help them in their learning process at University. Further, all the students were apprised to the faculty members of various departments & the officers of the University heading various departments. Efforts were made to imbibe a sense of belongingness among the students so that they may make the best possible utilization of the years they are going to spend on the University campus.



## TEACHERS DAY CELEBRATION

Big smiles, cherished moments, fun acts, inspirational songs, sporty spirit, motivational speeches, remembering greatest teachers of own times...that's the way Glocal University celebrated 5th September, Birth Anniversary of Shri Sarvapalli Radhakrishnan. The show was a classical and modern combination of several singing, dancing, poetry recitation, skits, mimicry, and mono act. Everyone sat glued to the show, which was followed by the announcement of the award winning teaching and non-teaching staff members.



## INTERNATIONAL PEACE DAY CELEBRATION

21st September 2019 was celebrated as "International Peace Day" in Glocal University. The program was organized by School of Education. The program was started with the Palm printing by faculty and students on the Peace wall created by students. Students from Afganistan, Nigeria, Sudan, India and other countries participated by presenting speeches, self-written poems in their languages, dohas, stories of peace of their countries and acts.



# GLOCAL LOVE FOR NATION







## RUN FOR UNITY

On the occasion of 'RUN FOR UNITY' organised on 31/10/2019, Glocal University participated in the event to foster, reinforce, preserve and strengthen unity, integrity and security of the nation. The event was organised by Glocal DSW team. The event inaugurated by a small speech by Mr. Nizamuddin, Registrar, Glocal University followed by a walk starting from Central Plaza and ending at Technology block parking area.



## 1 LAC TREE PLANTATION DRIVE

Glocal University planted one-lakh (1,00,000) saplings in the campus. Although university campus is lavish green and eco-friendly located in the foothills of Shivalik range, keeping its greenery alive is a pledge taken by the Glocal family in the tree plantation drive.



## FIT INDIA MOVEMENT

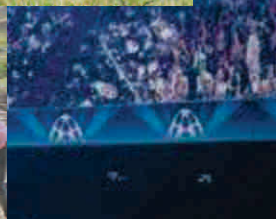
Glocal University proudly became the part of 'Fit India Movement' by witnessing the live streaming of address of Honorable Prime Minister of India Shri Narendra Modi on Doordarshan channel. All staff members of the University took the pledge of remaining and motivating "to be fit" by walking 10000 steps in the university central plaza.



# SPORTS AT GLOCAL









## INFRASTRUCTURE & LEARNING RESOURCES

The Glocal University is spread out in 300+ acres, connected with metallic road inside the University and state-of-art infrastructure including Hostels for both boys & girls separately, Residential Complex for Faculty/Staff, Villa and Guest House, ATM facility, 24x7 power backup, parking areas, Central Plaza – An open-air auditorium etc.

The Glocal University has already established the 'Glocal School' within its premises with the due affiliation from the CBSE to impart school education upto the 12th standard.

The 300-bed multi specialties hospital namely the Glocal Super Specialty Hospital & Research Centre has already started functioning and with further additions of all modern and sophisticated equipment and specialties and provides a comprehensive Ambulance transport service to patients requiring in need of the same.

Our sprawling 'Food Court' in 2 floors having adequate space and its construction is over, which will consist of several branded eating joints, restaurants, and sweet shops etc.

Our impressive sports infrastructure consists of the open playgrounds for outdoor sports like Athletics, Football, Hockey, Cricket, Track for athletics, Basketball Courts, Squash/Tennis Courts. Our Indoor Sports facilities include Gymnasium with all modern equipment and facilities and table tennis. The swimming pool is proposed in the near future.

The University also maintains a growing fleet of self-owned, modern, comfortable and safe buses. The University also operates a platoon of Cars, Pick-up Trucks and Tractors to facilitate University and student needs.

Our entire University is Wi-Fi enabled with high speed and internet connectivity is available in hostel campus.

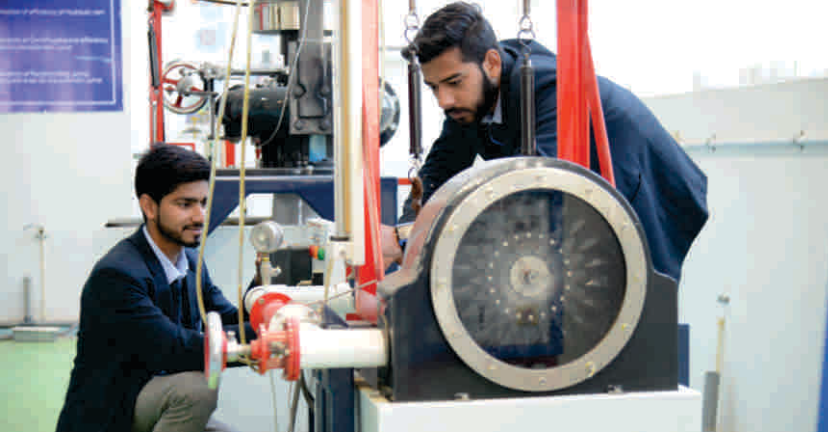
Our University campus is fully secure as it is surrounded by the high-rise walls and adequate no. of security guards both male & female is appointed to keep surveillance 24x7.

Our University has a Central Library with a seating capacity of 500 students with 30,000+ books. In addition to the central library, we are having also 3 Departmental libraries. School of Pharmacy, Law & Technology. In the form of e-library, we have taken Institutional membership of the Delnet, Manupatra and NPTEL to take care of e-books and e-journal needs.

There are ample and well-equipped laboratories that have been designed as per norms and standards set out by the UGC and respective Regulatory Bodies. To keep in view the future requirements, in the laboratories, we are further strengthening our lab with new advanced equipment.











## STUDENTS HOSTEL FACILITIES

- A/c –Non-A/c Rooms
- STD / ISD Telephone Facilities are available
- Wi-fi available on every floor
- Separate room arrangement for parents to visit
- Mess available with Veg & Non-Veg
- Hygienic food prepared by top chefs.
- Open Air Canteen Facility
- Exclusive uninterrupted study room for students after college hours
- Uninterrupted power supply, separate Generator for Students
- Banking Facility with ATM counter
- Medical facility available with free medicines provided to sick students
- Medical Lab facility also available.
- Mineral water provided to all the rooms
- Well-equipped Gym
- Sweets and Juice centre available for students after college hours
- Indoor and Outdoor Games facility
- Laundry and Ironing facility available
- Unisex Saloon available.
- Computer Lab facilities available after the class hours.
- Common Entertainment Room
- Cab Facilities





# 100%

## PLACEMENT ASSISTANCE



**Sashank Maikhuri**  
(B.Tech.ECE)  
₹ **18Lacs\***<sup>PA.</sup>  
Placed In: Autoliv, Japan



**Azam Rehman**  
(B.Tech., Petroleum)  
₹ **15Lacs\***<sup>PA.</sup>  
Placed In: OilServe Oil Field Services Ltd., Dubai, UAE



**Sashank Kirola**  
(B.Tech., CS)  
₹ **9Lacs\***<sup>PA.</sup>  
Placed In: BYJU'S



**Ifra Tahir**  
(B.Tech.CS)  
₹ **3.80Lacs\***<sup>PA.</sup>  
Placed In: TCS



**Ankur Rohilla**  
(MBA)  
₹ **3Lacs\***<sup>PA.</sup>  
Placed In: Just Dial



**Salman**  
(B.Tech., Petroleum)  
₹ **15Lacs\***<sup>PA.</sup>  
Placed In: OilServe Oil Field Services Ltd., Dubai, UAE



**M. Atif Usmani**  
(B.Tech.Civil)  
₹ **9Lacs\***<sup>PA.</sup>  
Placed In: BYJU'S



**Maneesh Kumar**  
(MBA)  
₹ **4.80Lacs\***<sup>PA.</sup>  
Placed In: Pin Click



**Jiyal Haq**  
(B.Tech., Petroleum)  
₹ **15Lacs\***<sup>PA.</sup>  
Placed In: OilServe Oil Field Services Ltd., Dubai, UAE



**Simran Naaz**  
(BBA)  
₹ **3.5Lacs\***<sup>PA.</sup>  
Placed In: Wealth Clinic



**Abhishek**  
(MBA)  
₹ **3.5Lacs\***<sup>PA.</sup>  
Placed In: Wealth Clinic



**Jahangir Alam**  
B.Tech. (ECE)  
₹ **3.5Lacs\***<sup>PA.</sup>  
Placed In: QOS Technology, Bangalore



**Abhinav Singh**  
(BBA)  
₹ **4.80Lacs\***<sup>PA.</sup>  
Placed In: Pin Click



**Rahul Kushwah**  
(B.Tech. Mechanical)  
₹ **4Lacs\***<sup>PA.</sup>  
Placed In: BYJU'S



**Fatima**  
(BBA)  
₹ **3.5Lacs\***<sup>PA.</sup>  
Placed In: Wealth Clinic



**M. Arif Ahmad**  
B.Tech. (ECE)  
₹ **3.5Lacs\***<sup>PA.</sup>  
Placed In: Cognizant



**Samrej Khan**  
(B.Tech.Petroleum)  
₹ **15Lacs\***<sup>PA.</sup>  
Placed In: OilServe Oil Field Services Ltd., Dubai, UAE



**Shrey Kaushal**  
(B.Tech. CS)  
₹ **4.5Lacs\***<sup>PA.</sup>  
Placed In: Extramarks



**M. Ibrahim**  
(BBA)  
₹ **1.8Lacs\***<sup>PA.</sup>  
Placed In: ITC, Saharanpur



**Yashveer Singh**  
B.Tech. (ECE)  
₹ **3.5Lacs\***<sup>PA.</sup>  
Placed In: Genpact



# OUR RECRUITERS & INTERNSHIPS

 India's No.1 local search engine		 An Incredible Indian Experience	 The Learning App	
 We only do what's right for you				
 Global Business Impact			 We Deliver our Promises	 समृद्धि से समृद्धि Ministry of Petroleum and Natural Gas (Government of India)
			 Energy From Sun	
 GLOBAL WORKFORCE SOLUTIONS. MAXIMIZED.	 YOUR GUIDE TO THE FINANCIAL JUNGLE			
	 We Match Better		 inspiring innovation	
				
 Creating tomorrow today	 DANG CAP DOANH NHAN	 आई डी पी एल		
				
 Values that bind	 nothing like anything			
 ISO 9001:2008 Certified				& Many More



# STUDENTS TESTIMONIALS



It gives me great pleasure to say with pride that I have completed my post-graduation from Glocal School of Business & Commerce. The relationship between faculties and student is very cordial, which gave me an opportunity to excel in my area of interest. I would like to thank all the faculties and staff for making me a "Better Person".

**Mohd. Ibrahim**

M.B.A. (HR), ITC Limited



"Glocal University is a place where you can find an amalgamation of learning, fun, culture, lore, literature and many such life preaching activities. I am thankful to Training & Placement cell, Glocal University for providing a platform to enhance my skills and an opportunity to showcase them."

**Simran Naaz**

BBA, Wealth Clinic



"I am grateful to the Glocal School of Science & Technology, Glocal University for providing me a great learning experience .. I owe a debt of gratitude to the faculty members who helped me in acquiring in-depth knowledge and skills ..

**Shashank Klraula**

B.Tech (CSE), I boss



Glocal University provides a platform for shaping our career. I am thankful for our Faculty members for guiding me through the ups and downs of my journey. Orientation Programs by Faculty members invoke my inner talent to achieve great success in future.

**Atif Usmani**

B.Tech. Civil, BYJU's



Glocal proved to be a pool of opportunities for me. It not just provide us with various platforms to showcase our abilities and skill but also helps us to learn all soft skills that are highly required. We get training on interview skills, communication skills, life skills, effective time management many more. I wholeheartedly thank Training & Placement Cell for the constant support."

**Abhinav Singh**

BBA, Pinclick



Today, I could proudly say that from glocal, I graduate with improved knowledge, skills, communication, practical knowledge and a placement in Autoliv Yokohama, Japan.

**Shashank Maikhurl**

B.Tech (ECE), Autoliv Yokohama, Japan



"I am grateful to the Glocal School of Science & Technology, Glocal University for providing me a great learning experience. I owe a debt of gratitude to the faculty members who helped me in acquiring in-depth knowledge and skills."

**Azam Rehman**

BBA, OilServe  
Oil Field Services Ltd., UAE



The best part of being a CSE student is to start your career with a company like TCS. It wasn't a day or a week's hard work. Glocal University has been supportive and helpful in this achievement. I'm very glad to share this positive journey of mine.

**Ifra Tahir**

B.Tech. CSE, TCS



We had this great opportunity to work on L & T's Delhi Metro Project. We worked on site as team which was a wonderful experience. The supportive attitude of the employees there builds our confidence to perform the tasks given to us enthusiastically.

**Afzal, Zishan, Saquib**

B.Tech (CIVIL L & T's Delhi Metro



I am immensely thankful to my Training & Placement Department of School of Science & Technology, Glocal University for conducting personality enhancement program and the Industry oriented program which helped me groom and prepare myself to face the challenges of the IT Industry.

**Shrey Kaushal**

B.Tech (CSE), Extramarks





An aerial night view of the Glocal University campus. The image shows several large, modern academic buildings with illuminated windows and architectural details. A prominent circular building with a central courtyard is visible in the foreground. The campus is surrounded by greenery and parking areas filled with cars. In the background, a city skyline is visible under a dark sky.

### Contact Details:

Glocal University,  
Delhi-Yamunotri Marg  
(State Highway 57),  
Mirzapur Pole,  
Distt. Saharanpur, U.P. - 247121,

Contact Number:  
Toll Free No. 1800 212 2434  
+91-8392939386, +91+8392902626

Email:  
[info@theglobaluniversity.in](mailto:info@theglobaluniversity.in)

Website:  
[www.glocaluniversity.edu.in](http://www.glocaluniversity.edu.in)